

COVID-19 Update

Health and Wellbeing Board

David Regan, Director of Public Health
Dr Manisha Kumar, Medical Director, MHCC

7th July 2021

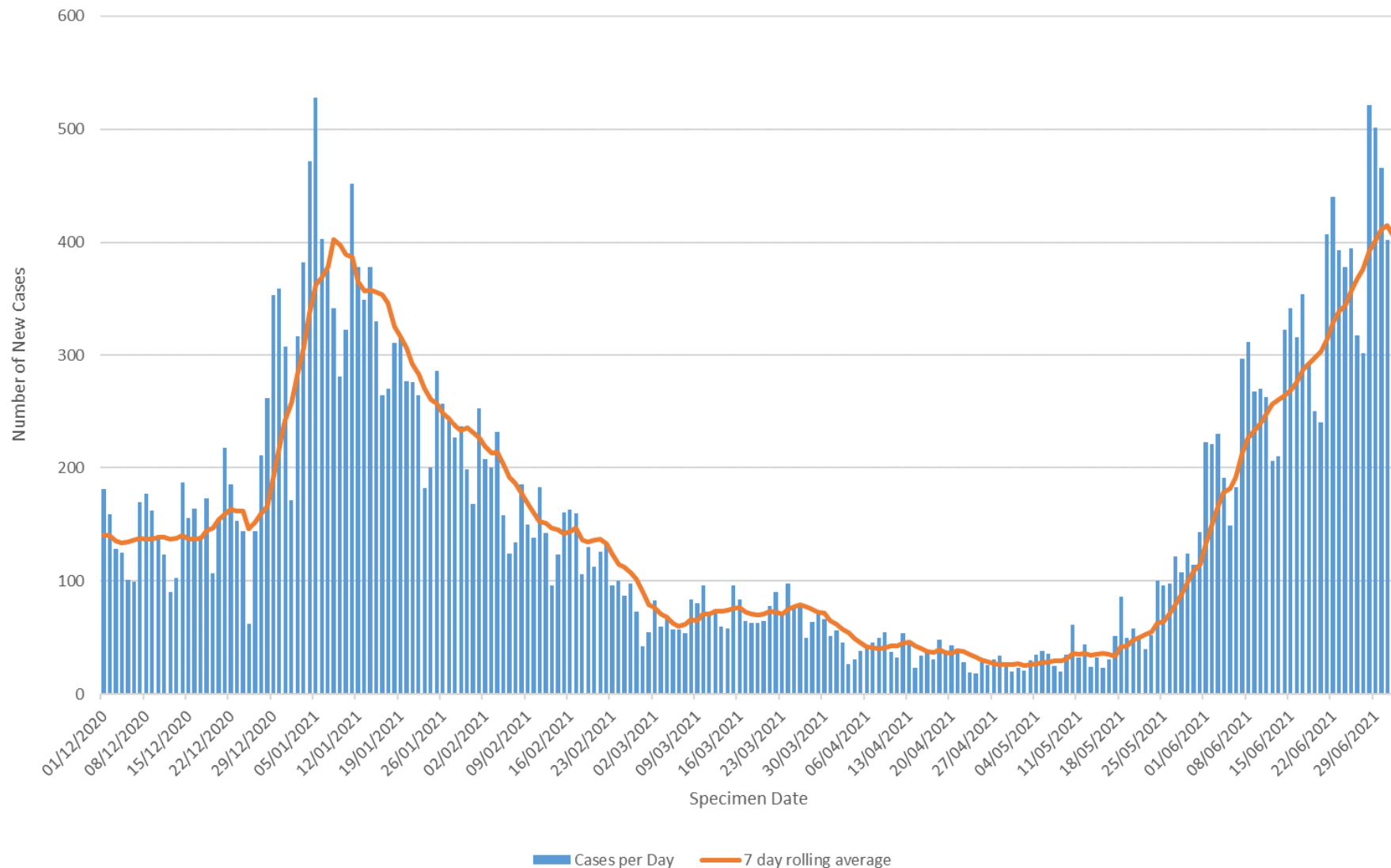
Headline Figures
7-days ending Friday 2 July 2021

Measure	All Ages	60+
Total number of new cases	2,836	76
Average number of new cases per day	405	11
Case detection rate per 100,000	513.0	106.8
7-day rate of change (%)	13.2%	24.6%

Note: Figures for 30 June - 2 July are provisional and subject to possible upward revision

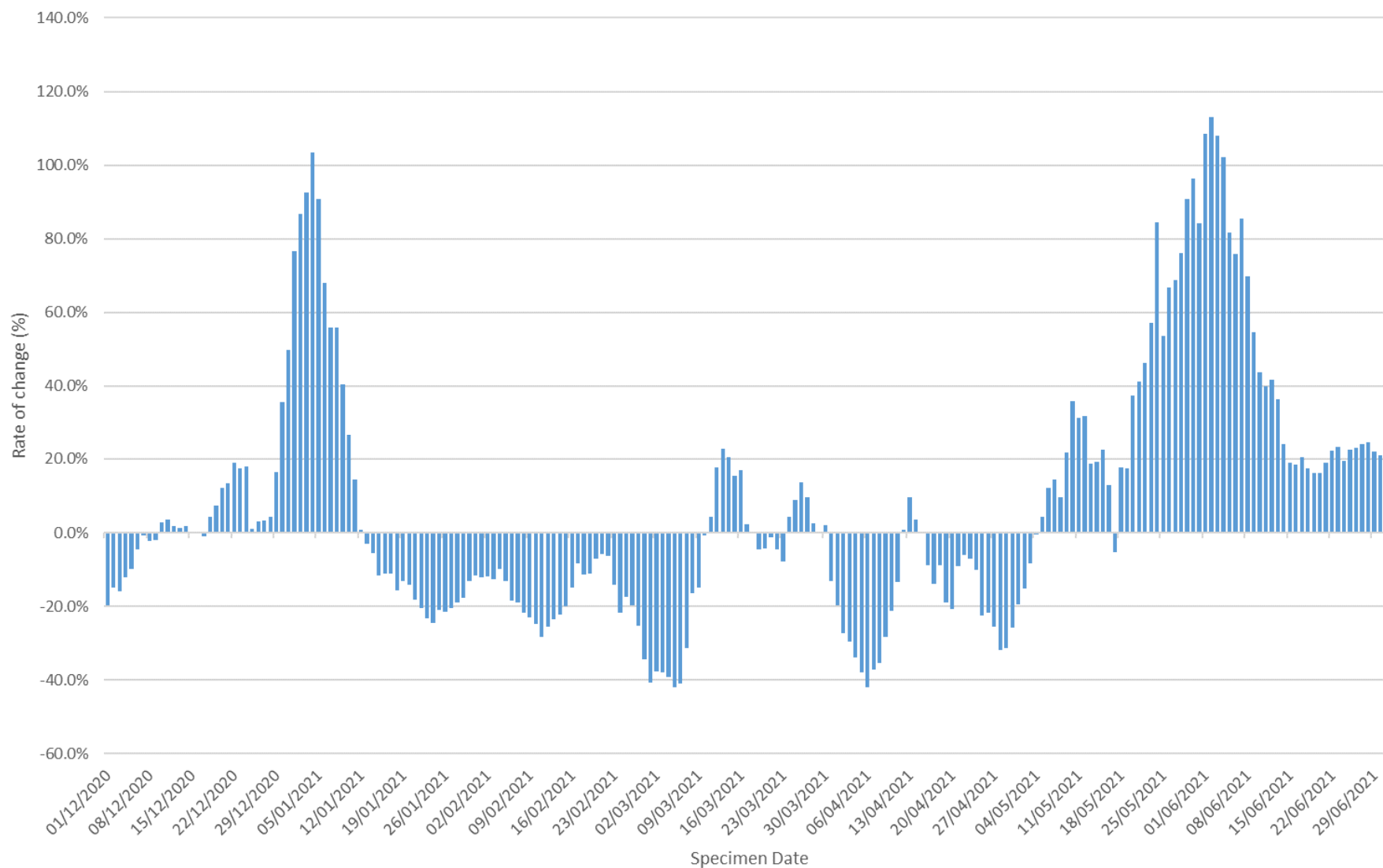
Daily number of confirmed COVID-19 cases over time and 7-day rolling average in Manchester, by specimen date (1 December 2020 to 2 July 2021)

Data for the most recent 3 days (30 June-2 July) is provisional and subject to change



Rate of change in number of confirmed cases of COVID-19 per 100,000 population (all ages) in Manchester by specimen date (1 December 2020 to 2 July 2021)

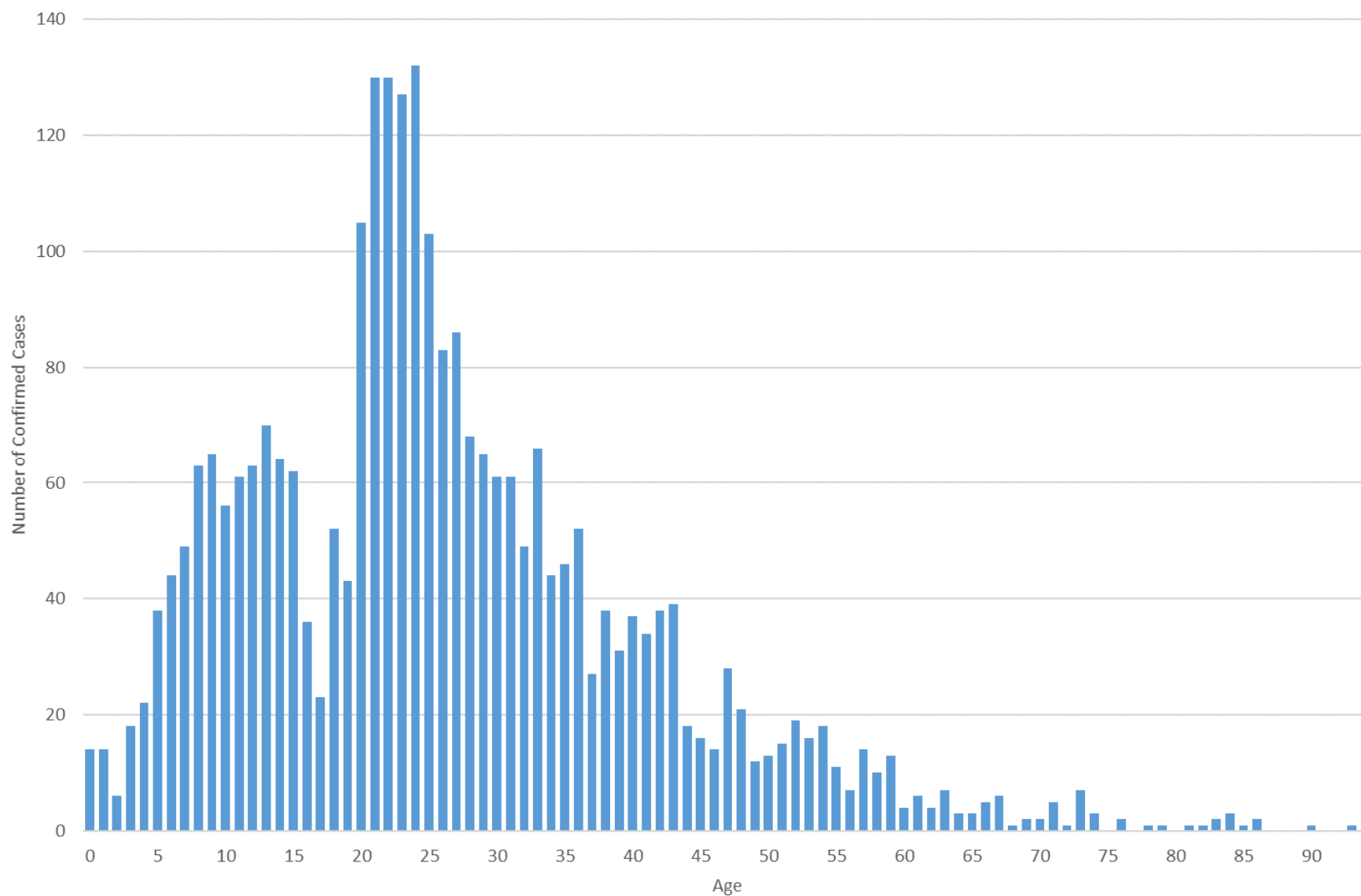
Data for the most recent 3 days (30 June-2 July) is provisional and subject to change



Case rate of COVID-19 per 100,000 per week in most recent 7 day reporting period and prior 7 day period for era plan priority wards ranked by most recent 7-day case rate

Rank	Ward	Prior week (14 June to 20 June)		Most recent week (21 June to 27 June)		Change in rate between two weeks	
		Cases	Rate	Cases	Rate	%	Absolute
10	Ardwick	85	362.9	127	542.2	49	179.3
11	Rusholme	86	483.1	96	539.3	11	56.2
12	Whalley Range	59	367.6	84	523.4	42	155.8
14	Moss Side	96	461.8	93	447.4	-3	-14.4
17	Longsight	74	391.4	83	439.0	12	47.6
29	Cheetham	51	248.1	63	306.5	23	58.4
30	Levenshulme	47	245.0	57	297.1	21	52.1
32	Crumpsall	34	198.0	44	256.2	29	58.2

Number of confirmed COVID-19 cases in last 7 days in Manchester by single year of age (26 June to 2 July 2021)



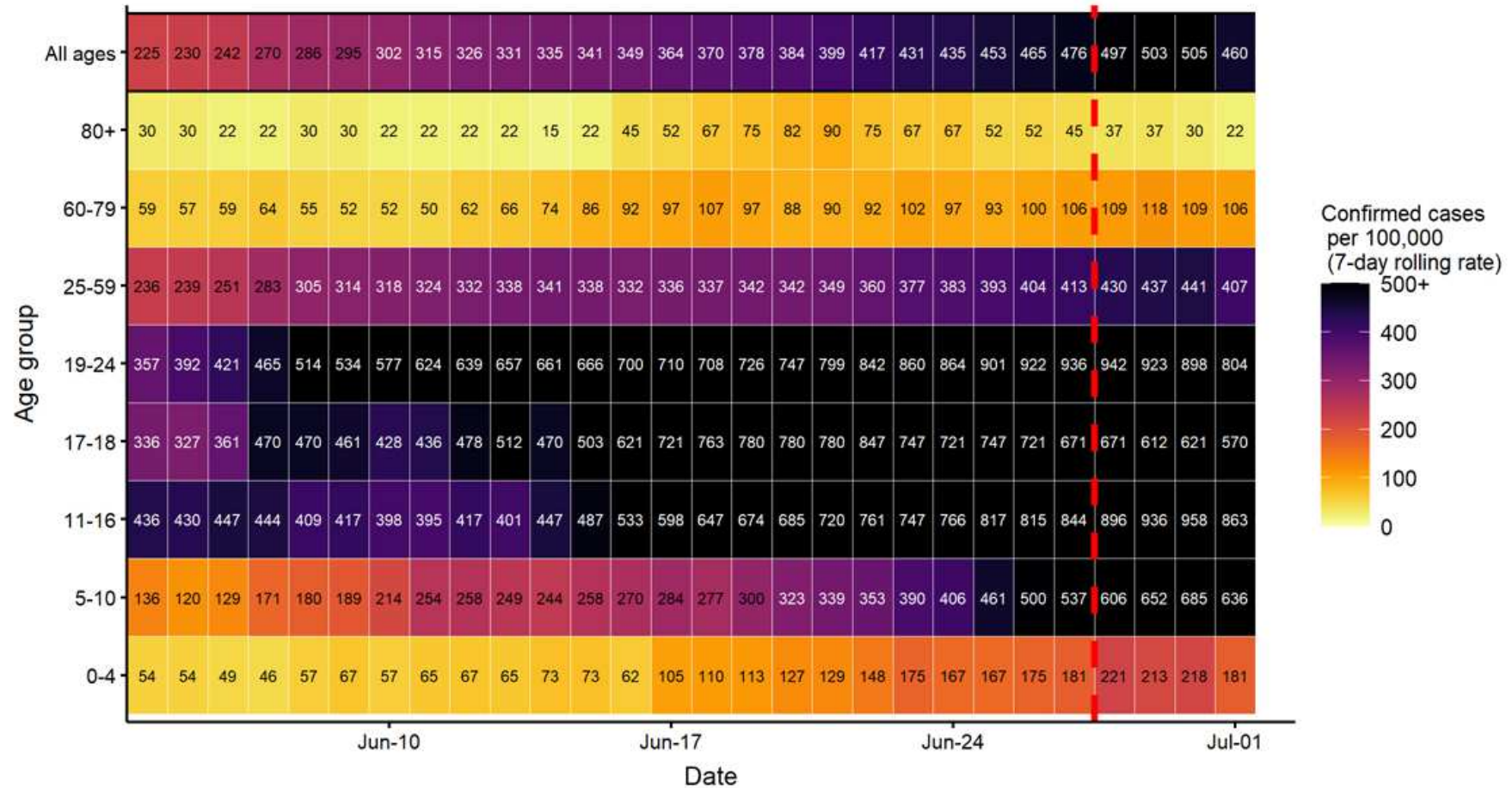
Number of confirmed cases of COVID-19 and rate per 100,000 population in Manchester, by age group: 2 July 2020 (7 day total)

Data for the most recent 3 days (30 June-2 July) is provisional and subject to change

	Number of cases	Rate per 100,000	Abs. change	7-day rate of change*
Pre-school (0-4 years)	74	199.4	11	17.5%
Primary school (5-10 years)	315	726.2	115	57.5%
Secondary school (11-16 years)	356	963.5	54	17.9%
Older teenagers (17-18 years)	75	629.1	-15	-16.7%
Younger working age (19-24 yrs)	667	837.9	-50	-7.0%
Working age (25-59 years)	1,273	466.8	201	18.8%
Younger older people (60-79 yrs)	63	109.0	9	16.7%
Older people (80+ years)	13	97.3	6	85.7%
Total (All ages)	2,836	513.0	331	13.2%

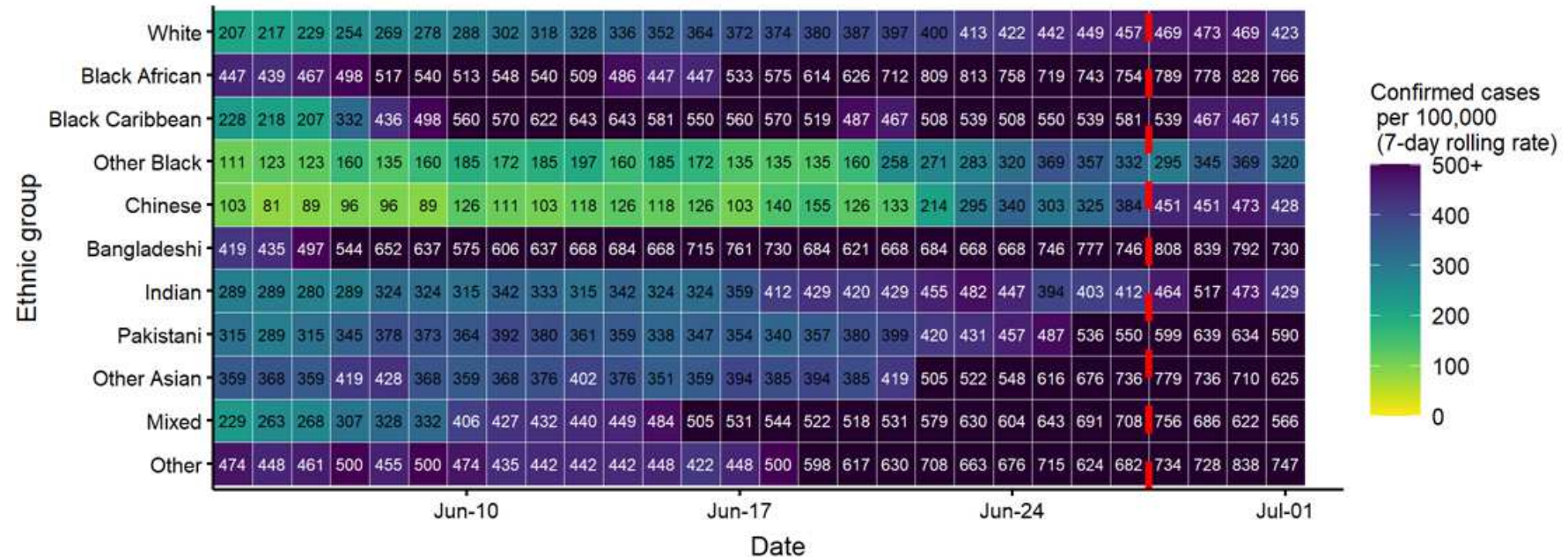
* Compared with prior 7-day period 10/06/2021 to 16/06/2021

Age specific 7-day rolling case rates per 100,000 population in Manchester (4 June to 1 July 2021)



Note: The red dashed line denotes the 4 most recent days that are subject to reporting delays

Ethnicity specific 7-day rolling case rates per 100,000 population in Manchester (4 June to 1 July 2021)

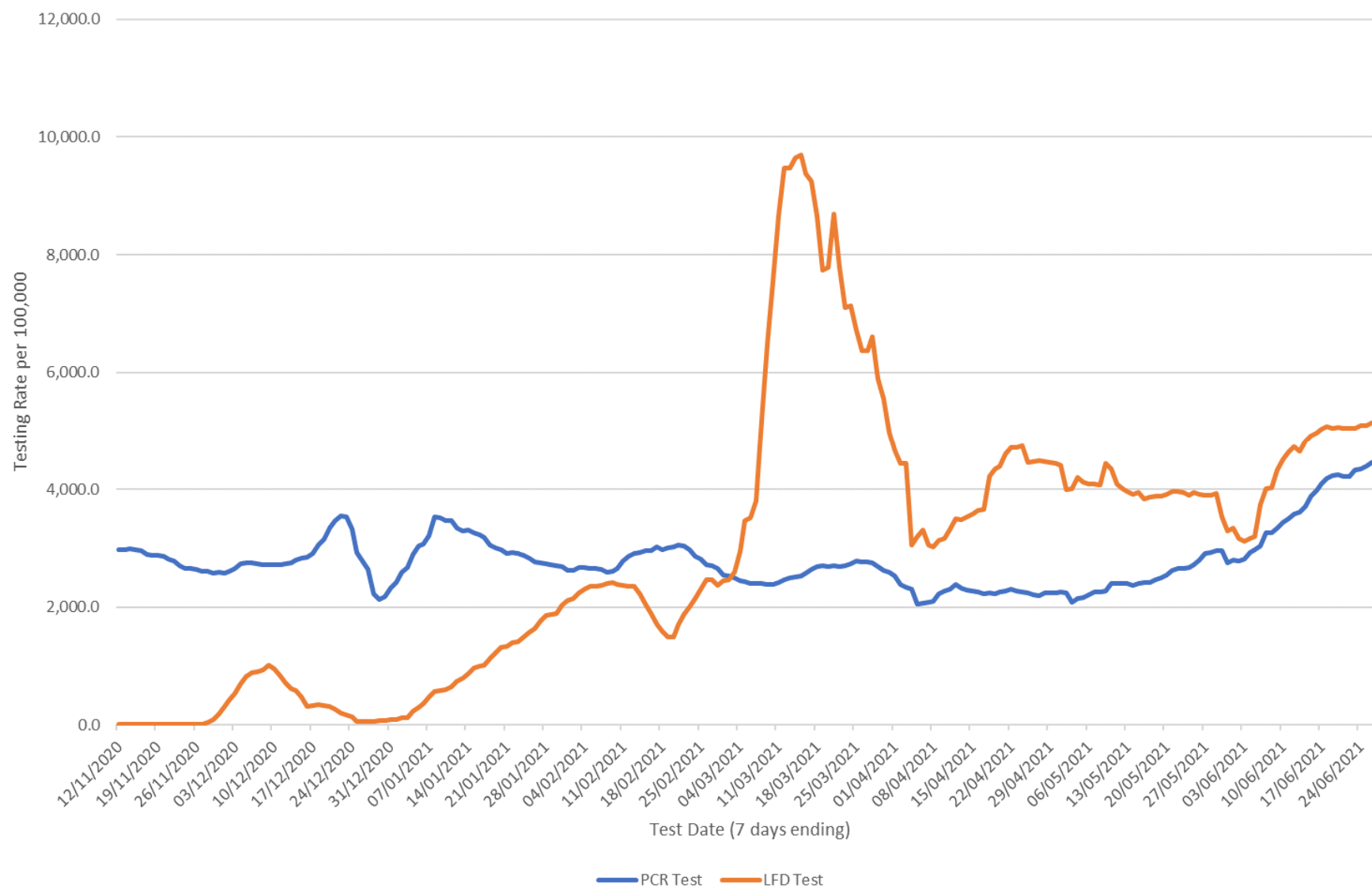


Excluding 3.9% ethnicity data classified as Na or Unknown.
Where text is red rates should be interpreted with caution as underlying case numbers are <5.

As of 26/05/2021 an issue with denominators for the categories Black African and Other Black has been corrected.

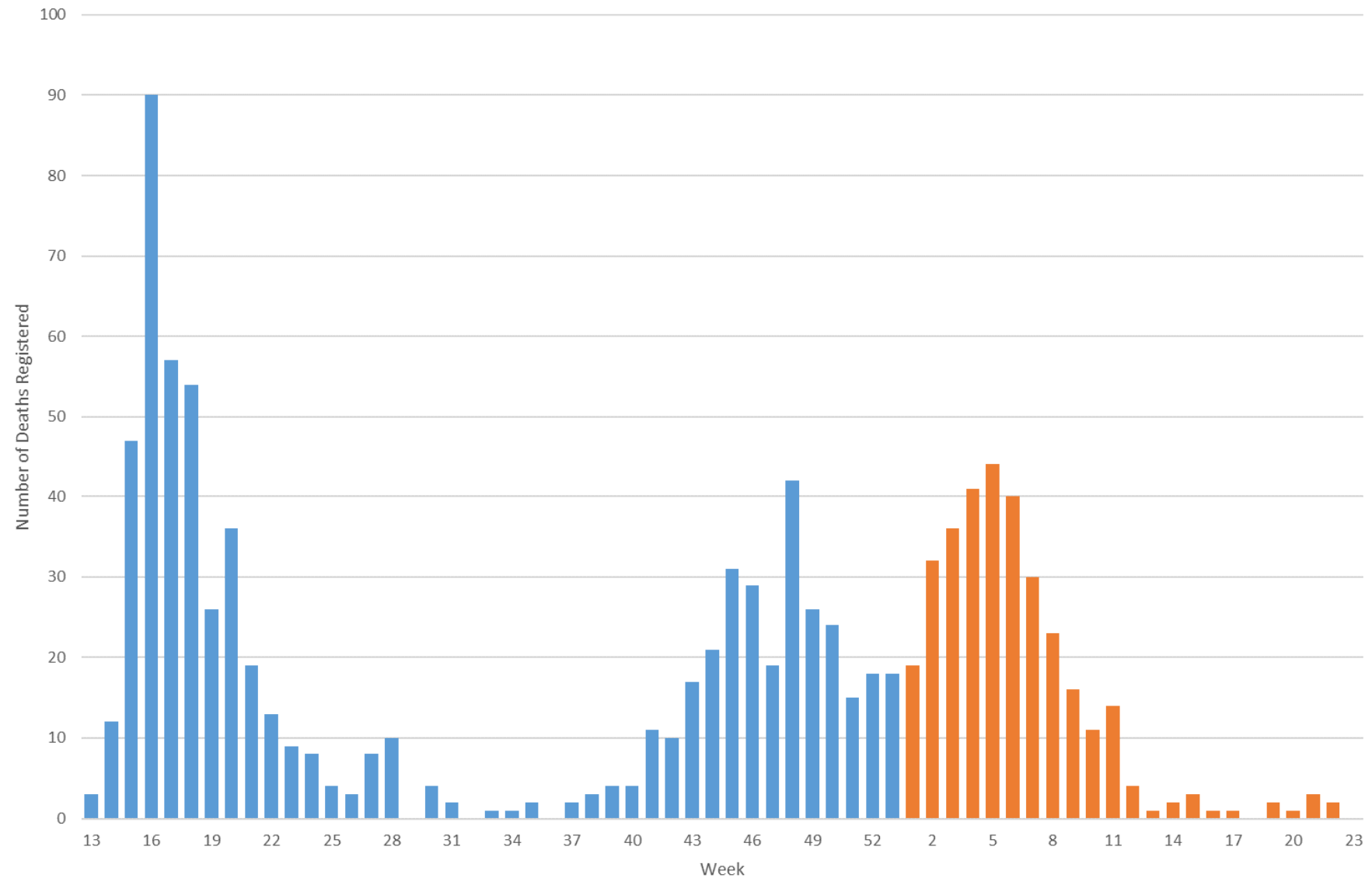
Note: The red dashed line denotes the 4 most recent days that are subject to reporting delays

Number of PCR and Lateral Flow Device (LFD) Tests Conducted on Manchester Residents per 100,000 Population (12 November 2020 to 28 June 2021)

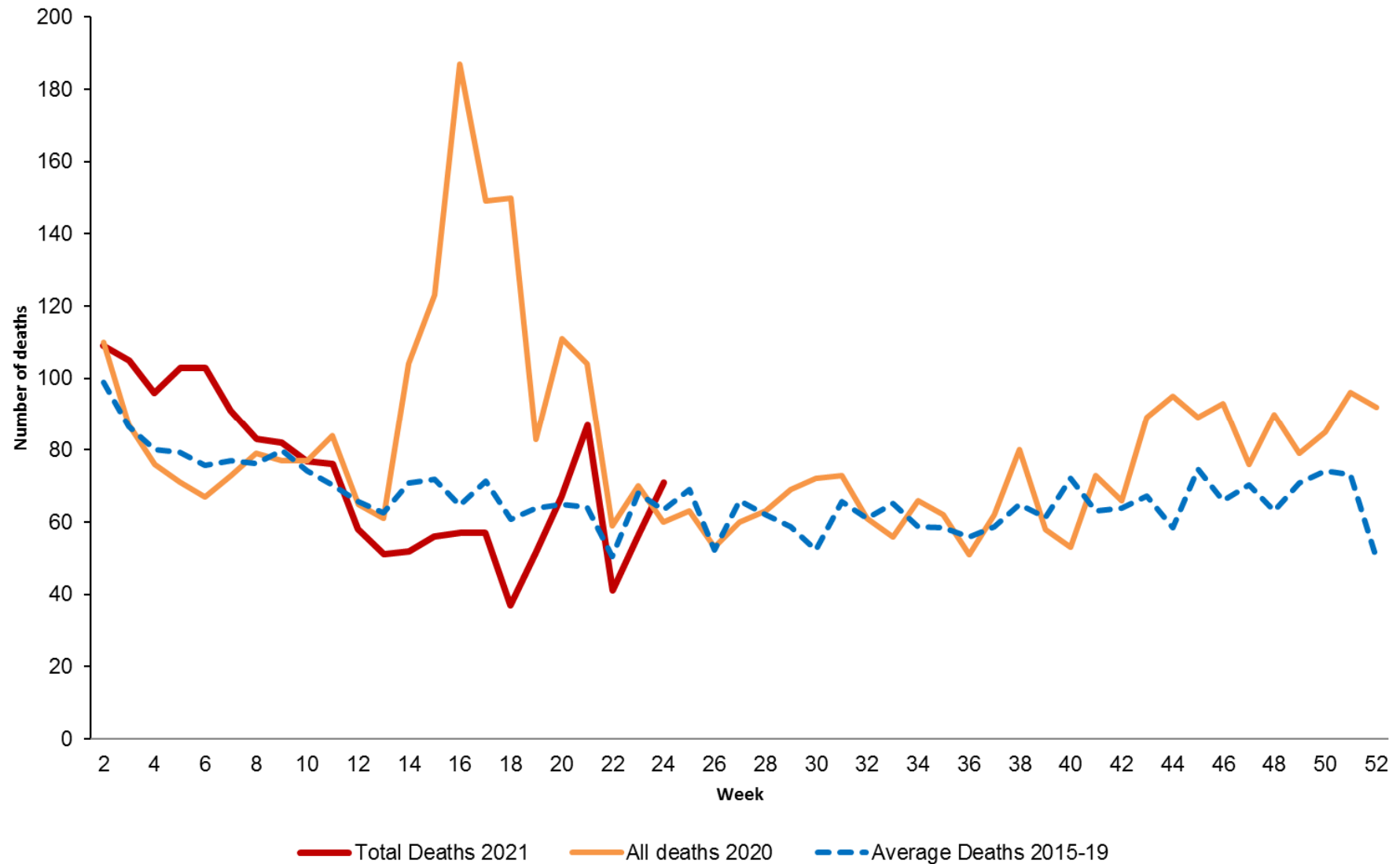


Total Number of Deaths Involving COVID-19 per Week in Manchester Residents

Deaths registered between Week 13 2020 and Week 24 2021



Total Number of Deaths (All Causes) per Week in Manchester Residents Deaths Registered in 2020 and 2021 compared with Average for 2015-2019



Manchester enhanced response area plan

- Manchester enhanced response area plan has been produced in response to the Government announcement on 8th June that Greater Manchester would be given this designated status
- The Manchester plan will focus on the following:
 1. Targeted vaccination drive
 2. Targeted communications and engagement
 3. Identifying and breaking chains of transmission (testing, contact tracing and support to self isolate)
 4. Additional measures
 5. Mitigating the risk of transmission in Universities
- The plan will continue to be delivered up to 19th July in line with Stage 4 of the Government roadmap and the announcement by the Prime Minister on Monday 5th July